

## UGMS

## UGMS AD 2.1 Aerodrome location indicator and name

UGMS - MESTIA

## UGMS AD 2.2 Aerodrome geographical and administrative data

1	ARP coordinates and site at AD	430318N 0424501E RWY 02/20 centre
2	Direction and distance from (city)	2 KM NE from Mestia center
3	Elevation / Reference temperature	4778 FT / 23°C
4	Geoid undulation at AD ELEV PSN	72 FT
5	MAG VAR / Annual change	7°E (2021) / NIL
6	Aerodrome operator	UNITED AIRPORTS OF GEORGIA LTD
	Address	UNITED AIRPORTS OF GEORGIA 0158 TBILISI GEORGIA
	Telephone	UNITED AIRPORTS OF GEORGIA +995322487300  MESTIA/QUEEN TAMAR AIRPORT ADMINISTRATION: +995591512533
	Telefax	NIL
	AFS	NIL
	E-mail	UNITED AIRPORTS OF GEORGIA info@airports.ge  MESTIA/QUEEN TAMAR AIRPORT ADMINISTRATION: mestia@airports.ge
	Website	NIL
7	Type of traffic permitted (IFR/VFR)	VFR
8	Remarks	NIL

## UGMS AD 2.3 Operational hours

1	AD Operator	Daily 0430-1430
2	Customs and immigration	NIL
3	Health and sanitation	NIL
4	AIS Briefing Office	NIL
5	ATS Reporting Office (ARO)	NIL
6	MET Briefing Office	NIL
7	ATS	Daily 0400-1440
8	Fuelling	NIL
9	Handling	Daily 0430-1430

10	Security	H24
11	De-icing	NIL
12	Remarks	NIL

## UGMS AD 2.4 Handling services and facilities

1	Cargo-handling facilities	NIL
2	Fuel/oil types	NIL
3	Fuelling facilities / capacity	NIL
4	De-icing facilities	NIL
5	Hangar space for visiting aircraft	NIL
6	Repair facilities for visiting aircraft	NIL
7	Remarks	NIL

## UGMS AD 2.5 Passenger facilities

1	Hotels	Available in the city
2	Restaurants	Restaurant in the city, cafe at AD and in the city
3	Transportation	Taxis from AD, car rent at AD
4	Medical Facilities	First medical aid at hospital in the city
5	Bank and Post Office	Bank in the city Post Office: NIL
6	Tourist Office	Available in the city and at AD
7	Remarks	NIL

## UGMS AD 2.6 Rescue and fire fighting services

1	AD category for fire fighting	CAT 3
2	Rescue equipment	1 Fire truck
3	Capability for removal of disabled aircraft	Available for L410-UVPE
4	Remarks	Responsible person's details: Mob: +995577345508 E-mail: a.gigani@airports.ge

## UGMS AD 2.7 Seasonal availability - clearing

1	Types of clearing equipment	1 Snow removal vehicle - Bucher Rolba; 1 Water Sprinkler ZIL-130 KPM-130
2	Clearance priorities	1. RWY 02/20 and access roads to the Airport Rescue Service 2. TWYs and taxiing paths on the apron 3. Aircraft parking stands and the aerodrome vehicles paths

3	Remarks	The snow plan and friction measuring details see in section AD 1.2.2
---	---------	--

## UGMS AD 2.8 Aprons, taxiways and check locations/positions data

1	Apron designation, surface and strength of aprons	APRON 1: Concrete, PCR 28/R/B/X/U APRON 2: Concrete, PCR 28/R/B/X/U
2	Taxiway designation, width, surface and strength	TWY A: 18 M, Concrete, PCR 28/R/B/X/U TWY B: 18 M, Concrete, PCR 28/R/B/X/U TWY F: 18 M, Concrete, PCR 28/R/B/X/U
3	Altimeter checkpoint location and elevation	Apron 1 Elevation 4741 FT Apron 2 Elevation 4769 FT
4	VOR checkpoints	NIL
5	INS checkpoints	NIL
6	Remarks	NIL

## UGMS AD 2.9 Surface movement guidance and control system and markings

1	Use of aircraft stand ID signs, TWY guide lines and visual docking/parking guidance system of aircraft stands	Sign boards at intersections of TWY with RWY. Guide lines at aprons.
2	RWY and TWY markings and LGT	RWY: Designation, THR, TDZ, centreline, edge line, RWY end marked as appropriate. TWY: Centre line. LGT: NIL
3	Stop bars and RWY guard lights	NIL
4	Other RWY protection measures	NIL
5	Remarks	NIL

## UGMS AD 2.10 Aerodrome obstacles

### 1 Obstacles in Area 2

Designator	Type	Coordinates	ELEV/HGT	Markings / LGT type, colour	Remarks
1	2	3	4	5	6
UGMS05	Building	430237.9N 0424429.3E	4887/- FT	NIL	NIL

### 2 Obstacles in Area 3

Designator	Type	Coordinates	ELEV/HGT	Markings / LGT type, colour	Remarks
1	2	3	4	5	6
UGMS01	Tower	430321.5N 0424459.5E	4789.0/- FT	NIL	NIL
UGMS02	Antenna	430321.5N 0424501.2E	4776.0/- FT	NIL	NIL

Designator	Type	Coordinates	ELEV/HGT	Markings / LGT type, colour	Remarks
1	2	3	4	5	6
UGMS03	Pole	430316.9N 0424457.9E	4775.0/- FT	NIL	Wind Sensor
UGMS04	Pole	430305.9N 0424449.7E	4732.1/- FT	NIL	Wind Direction Indicator

## UGMS AD 2.11 Meteorological information provided

1	Associated MET Office	Mestia
2	Hours of service	From 05:00 - until 13:00
	MET Office outside hours	-
3	Office responsible for TAF preparation	Tbilisi - UGTB
	Periods of validity	From 05:00 - until 17:00
4	Trend forecast	NIL
	Interval of issuance	NIL
5	Briefing/consultation provided	MET staff consultation at Tbilisi UGTB MET Office and Kutaisi UGKO MET Office
6	Flight documentation	Charts, abbreviated, plain language text
	Language(s) used	English
7	Charts and other information available for briefing or consultation	SIGMET, GAMET, AIRMET
8	Supplementary equipment available for providing information	NIL
9	ATS units provided with information	Mestia AFIS
10	Additional information (limitation of service, etc.)	NIL

## UGMS AD 2.12 Runway physical characteristics

RWY Designations	TRUE BRG	Dimensions of RWY (M)	Strength (PCR) and surface of RWY and SWY	THR coordinates, RWY end coordinates, THR geoid undulation	THR elevation and highest elevation of TDZ of precision APP RWY
1	2	3	4	5	6
02	030.51°	1150 x 30	28/R/B/X/U Concrete	THR: 430302.41N 0424448.64E END: 430334.41N 0424514.36E GUND: NIL	THR: 4702 FT TDZ: 4713.0 FT
20	210.52°			THR: 430327.49N 0424508.80E END: 430302.41N 0424448.64E GUND: NIL	THR: 4761 FT

RWY Designations	Slope of RWY - SWY	SWY dimensions (M)	CWY dimensions (M)	Strip dimensions (M)	RESA dimensions (M)
1	7	8	9	10	11
02	2.00%	NIL	NIL	1260 x 60	NIL
20	-2.00%	50 x 30	NIL		30 x 60

RWY Designations	Location and Description of Arresting System	OFZ	Remarks
1	12	13	14
02	NIL	NIL	NIL
20	NIL	NIL	NIL

### UGMS AD 2.13 Declared distances

RWY Designator	TORA (M)	TODA (M)	ASDA (M)	LDA (M)	Remarks
1	2	3	4	5	6
02	NIL	NIL	NIL	1150	NIL
20	1150	1150	1200	900	NIL

### UGMS AD 2.14 Approach and runway lighting

RWY Designator	APCH LGT type, LEN, INTST	THR LGT, colour, WBAR	VASIS (MEHT) PAPI	TDZ LGT LEN	RWY Centre Line LGT Length, spacing, colour, INTST
1	2	3	4	5	6
02	NIL	NIL	NIL	NIL	NIL
20	NIL	NIL	NIL	NIL	NIL

RWY Designator	RWY edge LGT LEN, spacing, colour, INTST	RWY End LGT colour, WBAR	SWY LGT LEN, colour	Remarks
1	7	8	9	10
02	NIL	NIL	NIL	NIL
20	NIL	NIL	NIL	NIL

### UGMS AD 2.15 Other lighting and secondary power supply

1	ABN/IBN location, characteristics and hours of operation	ABN: NIL IBN: NIL
2	LDI location and LGT Anemometer location and LGT	NIL NIL
3	TWY edge and centre line lighting	NIL
4	Secondary power supply/switch-over time	NIL
5	Remarks	NIL

### UGMS AD 2.16 Helicopter landing area

1	Coordinates TLOF or THR of FATO Geoid undulation	NIL
---	---	-----

2	TLOF and/or FATO elevation M/FT	NIL
3	TLOF and FATO area dimensions, surface, strength, marking	NIL
4	True BRG of FATO	NIL
5	Declared distance available	NIL
6	APP and FATO lighting	NIL
7	Remarks	NIL

## UGMS AD 2.17 Air traffic services airspace

1	Designation and lateral limits	MESTIA FIZ 430104N 0423311E - 430302N 0424046E - 430645N 0424346E - 430424N 0424912E - 430149N 0424707E - 425847N 0423414E - 430104N 0423311E
2	Vertical limits	GND to 2000 FT AGL
3	Airspace classification	G
4	ATS unit call sign Language(s)	MESTIA INFORMATION EN
5	Transition altitude	NIL
6	Hours of applicability	NIL
7	Remarks	NIL

## UGMS AD 2.18 Air traffic services communication facilities

Service designation	Call sign	Channel(s)	SATVOICE number(s)	Logon address	Hours of operation	Remarks
1	2	3	4	5	6	7
AFIS	MESTIA INFORMATION	121.100 MHz	NIL	NIL	0400-1440	NIL

## UGMS AD 2.19 Radio navigation and landing aids

NIL

## UGMS AD 2.20 Local aerodrome regulations

### 1 Airport regulations

Isolated aircraft stand is located on RWY 02 end with coordinates: 430334.41N 0424514.36E.

Friction coefficient - Bowmonk AFM2 Airfield Friction Meter.

### 2 Taxiing to and from stands

Aerodrome taxiways are not equipped with lights. Taxiing to/from parking stands is visual.

### 3 Apron – taxiing during winter conditions

Aerodrome taxiways are not equipped with lights. Taxiing to/from parking stands is visual.

### 4 Regulations for helicopters

Take-off and landing on RWY 02/20. Stands 2, 3, 4, 5 are available for helicopters. Air-taxiing, taxiing to/from stands 2, 3, 4, 5 by TWY B only.

### 5 Removal of disabled aircraft from runway

When an aircraft is wrecked on a runway, it is duty of the owner or user of such aircraft to have it removed as soon as possible. If a wrecked aircraft is not removed from the runway as quickly as possible by the owner or user, the aircraft will be removed by the aerodrome authority at the owner's or user's expense.

## UGMS AD 2.21 Noise abatement procedures

NIL

## UGMS AD 2.22 Flight procedures

### 1 General

Flights within Mestia FIZ shall be in accordance with the Visual Flight Rules.

AFIS service is only provided within the operational hours of the unit. Outside the AFIS operational hours only FIS service is available.

The AFIS unit provides aircraft with information on known traffic and available information on meteorological and aerodrome conditions.

### 2 Procedures for IFR flights within Mestia FIZ

Not applicable.

### 3 Radar procedures within Mestia FIZ

Not applicable.

### 4 Procedures for VFR flights within Mestia FIZ

- Flight plans (FPLs) are required to be submitted for operations within Mestia FIZ;
- Flights shall be conducted with vertical visual reference to the ground;
- Two-way radio communication shall be maintained with the Mestia AFIS unit on the unit frequency;
- Inbound aircraft shall establish communication with the AFIS unit 5 minutes before crossing the FIZ boundary. However, contact establishing can be delayed until the moment it becomes practically possible.

### 5 VFR routes within Mestia FIZ

No special arrival and departure routes are established for VFR traffic.

## UGMS AD 2.23 Additional information

NIL

UGMS AD 2.24 Charts related to an aerodrome

Chart Name	Page
Aerodrome chart - ICAO	AD 2.UGMS-ADC
Visual approach chart - ICAO	AD 2.UGMS-VAC
* the chart contains a text page	

UGMS AD 2.25 Visual segment surface (VSS) penetration

To be developed.




AERODROME CHART-ICAO

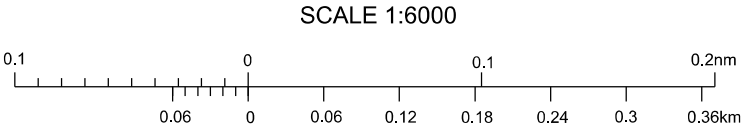
MESTIA (UGMS)

43°03'18"N  
042°45'01"E

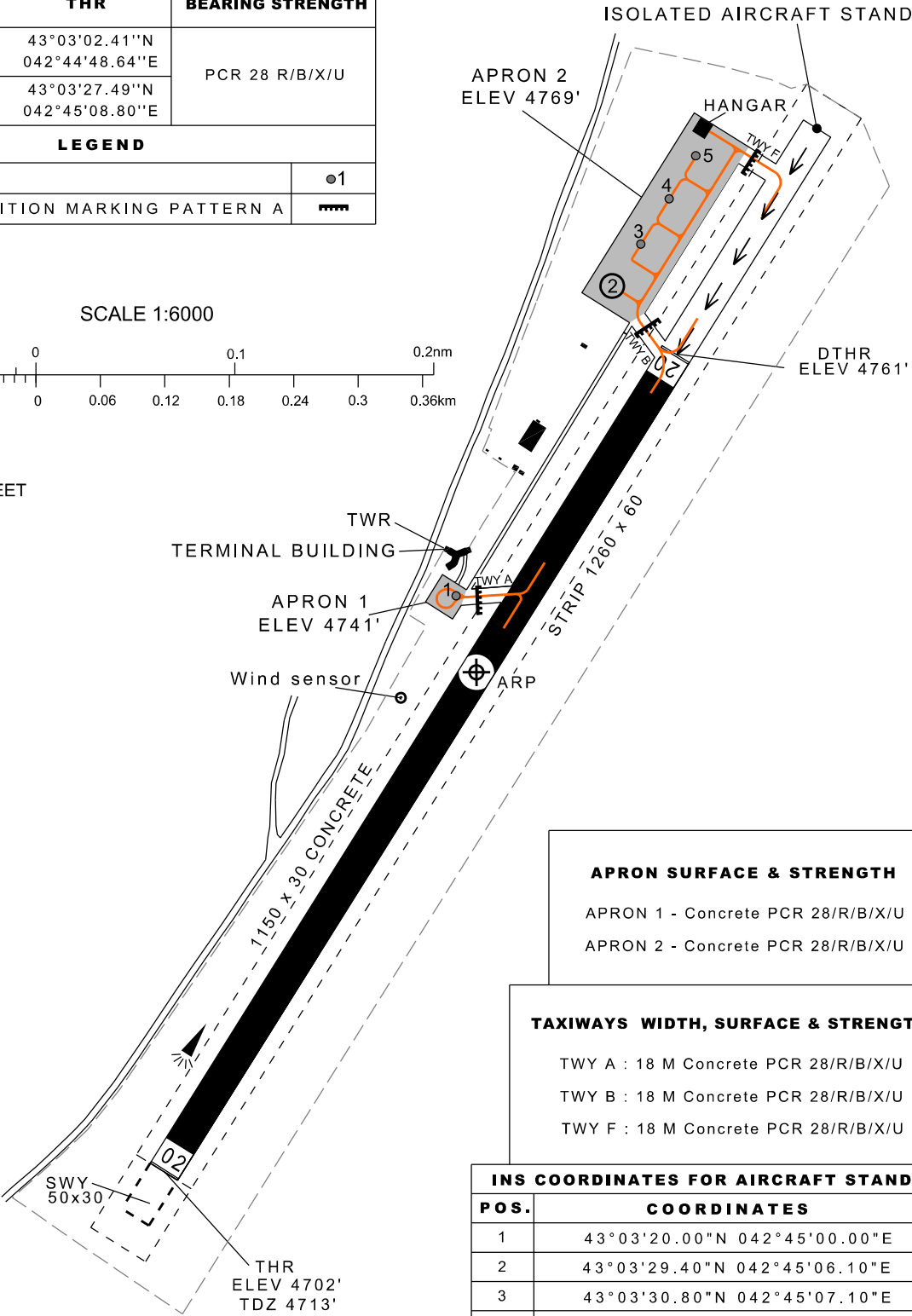
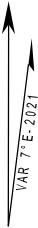
ELEV 4778'

MESTIA INFO 121.100

RWY	DIRECTION	THR	BEARING STRENGTH
02	023°	43°03'02.41''N 042°44'48.64''E	PCR 28 R/B/X/U
20	203°	43°03'27.49''N 042°45'08.80''E	
LEGEND			
AIRCRAFT STAND			●1
RWY-HOLDING POSITION MARKING PATTERN A			



ELEV, ALT IN FEET  
DIST IN M  
BRG ARE MAG



**APRON SURFACE & STRENGTH**

APRON 1 - Concrete PCR 28/R/B/X/U

APRON 2 - Concrete PCR 28/R/B/X/U

**TAXIWAYS WIDTH, SURFACE & STRENGTH**

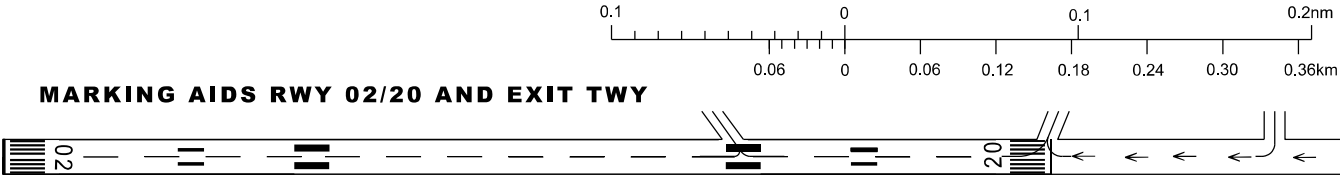
TWY A : 18 M Concrete PCR 28/R/B/X/U

TWY B : 18 M Concrete PCR 28/R/B/X/U

TWY F : 18 M Concrete PCR 28/R/B/X/U

INS COORDINATES FOR AIRCRAFT STANDS	
POS.	COORDINATES
1	43°03'20.00"N 042°45'00.00"E
2	43°03'29.40"N 042°45'06.10"E
3	43°03'30.80"N 042°45'07.10"E
4	43°03'32.20"N 042°45'08.30"E
5	43°03'33.50"N 042°45'09.40"E

MARKING AIDS RWY 02/20 AND EXIT TWY



Changes: Bearing strength updated

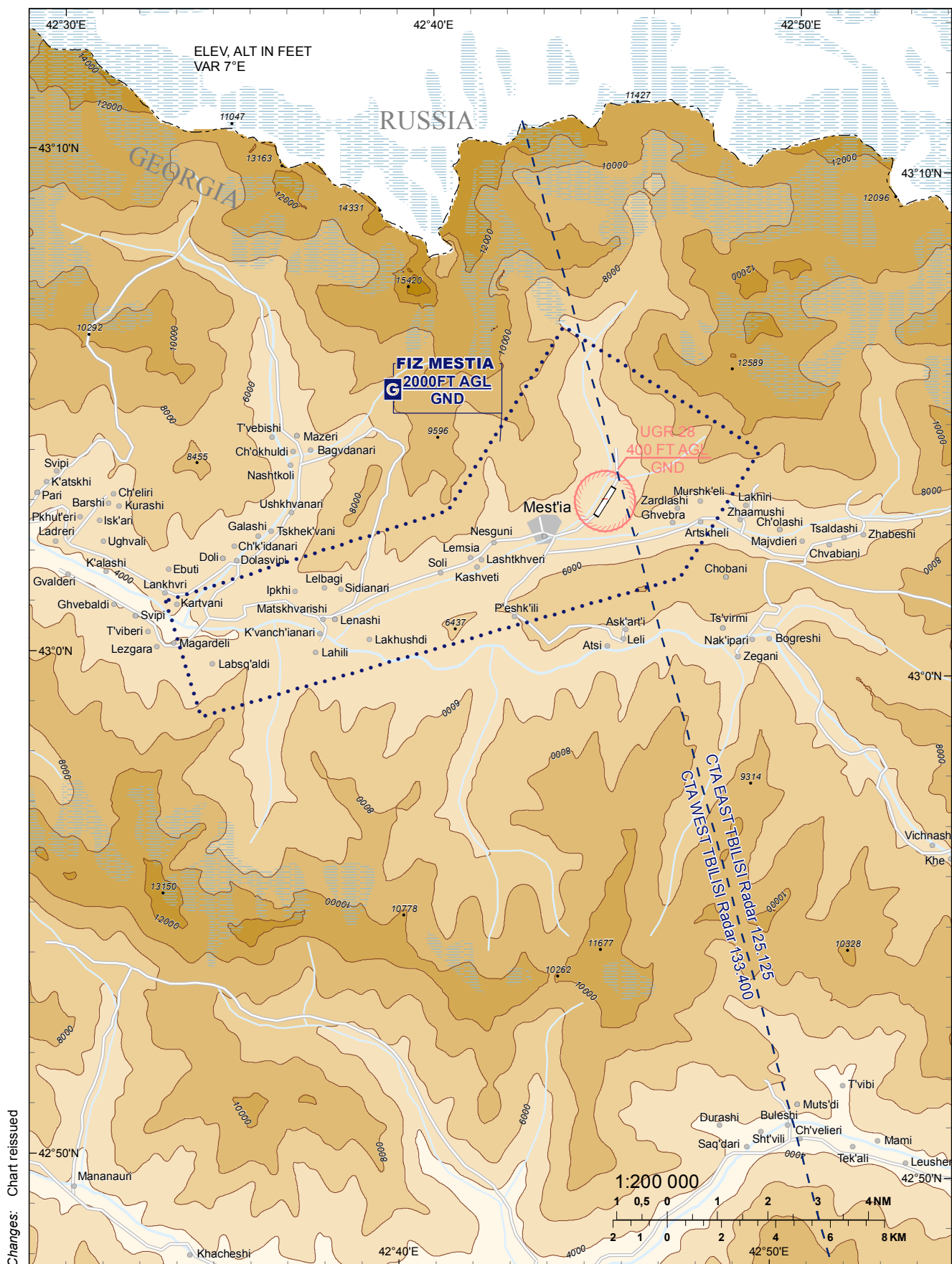
*PAGE INTENTIONALLY LEFT BLANK*

## VISUAL APPROACH CHART - ICAO

## MESTIA (UGMS)

AERODROME ELEV. 4778'

MESTIA INFO 121.100



Changes: Chart reissued

*PAGE INTENTIONALLY LEFT BLANK*